

What it's great for (especially for AI video creators)

Nano Banana is a “video workflow cheat code” because it helps you:

- Design shots fast
- Generate/refine backgrounds
- Create/clean visual assets that feed into AI video tools

Key capabilities (from the lesson):

1. **Character consistency** (locking a character design and reusing it across edits)
 2. **Multi-image fusion** (compositing two images together convincingly)
 3. **Multi-turn editing** (iterating the same frame step-by-step for storyboarding)
 4. **Natural language edits** (simple prompts, no prompt gymnastics)
 5. **Pose control using a stick figure reference**
 6. **Adding many objects reliably** using a Canva labeling method
-

Quick Start: Do Your First Edit (the core method)

1. Open the **Gemini app**
2. Choose **Gemini 2.5 Flash Image** (“Nano Banana”)
3. **Drag in / upload** your image
4. Type a simple instruction in plain English
5. Generate → review → iterate (if needed)

The key mindset: **talk to it like your crew**, not like a prompt engineer.

Example prompts straight from the lesson style:

- “Change the clothes to **1970s attire**.”

- “Turn the lighting **dramatic with a red tone.**”

BEFORE



AFTER ASKING IT TO REPLACE GLASS WITH A WATER BOTTLE:

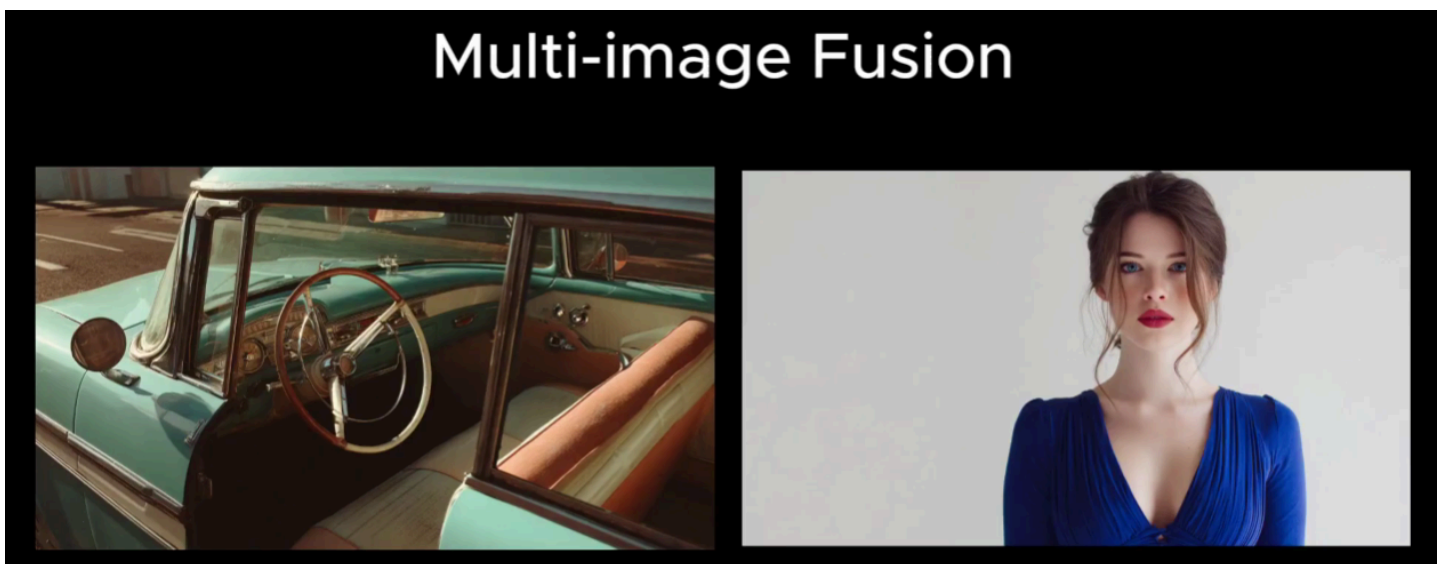
change the mug to a water bottle:



Scene transformation



Multi-Image Fusion (Composite an Actor into a World)



Use case from the captions: you have:

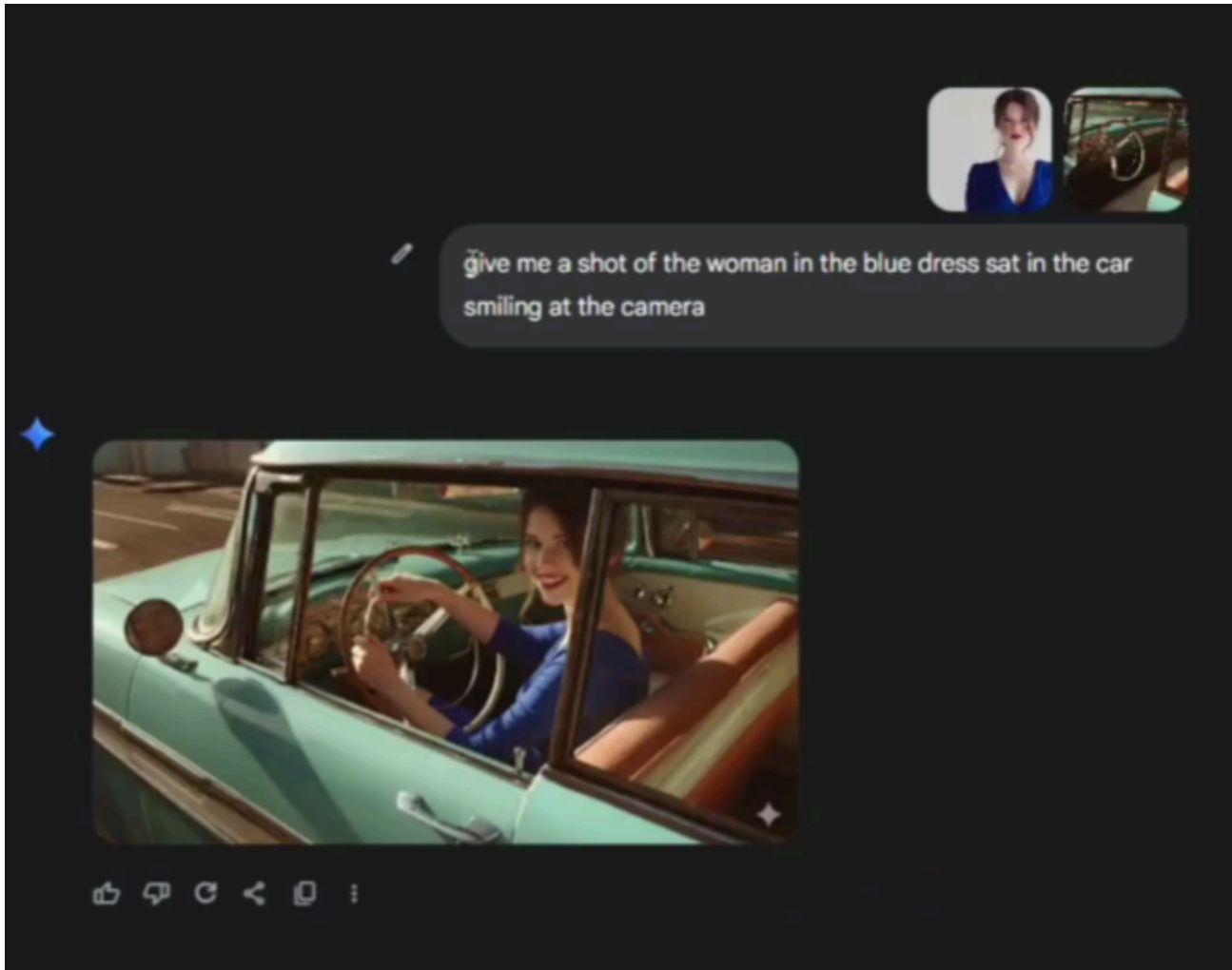
- A Midjourney car shot

- A separate image of your **actor**

Nano Banana can merge them so the actor looks like they're **really in that world**, and it can even **color-correct** the inserted subject to match the scene.

Prompt template

Give me a shot of the woman in the blue dress sat in the car smiling at the camera



Multi-Turn Editing for Storyboarding (the “film set in minutes” workflow)

This is the “start rough → refine repeatedly” approach.

Typical flow (from the lesson):

1. Start with a rough image
2. Make it **night**
3. Add **neon signs**
4. Add **rain on the street**
...until the shot matches your vision

Concrete walkthrough from the captions: “Make the castle spookier”

The lesson’s example sequence:

1. Start with a **castle** you like, but it isn’t spooky enough
2. Prompt it to change to **nighttime**
3. Then add a **pirate ship** for extra effect
4. Then add a **logo generated in Midjourney** — preserved cleanly and placed exactly where requested

Prompt examples

- “Make this scene **nighttime**, keep everything consistent.”
- “Add a **pirate ship** near the castle for extra effect.”
- “Add this **logo** to the [specific location]. Keep it crisp and clean.”

Why this matters: it enables **ads/films** workflows where you add **small tweaks and elements** with **no glitching**.

BEFORE



AFTER SEVERAL TURNS OF EDITS



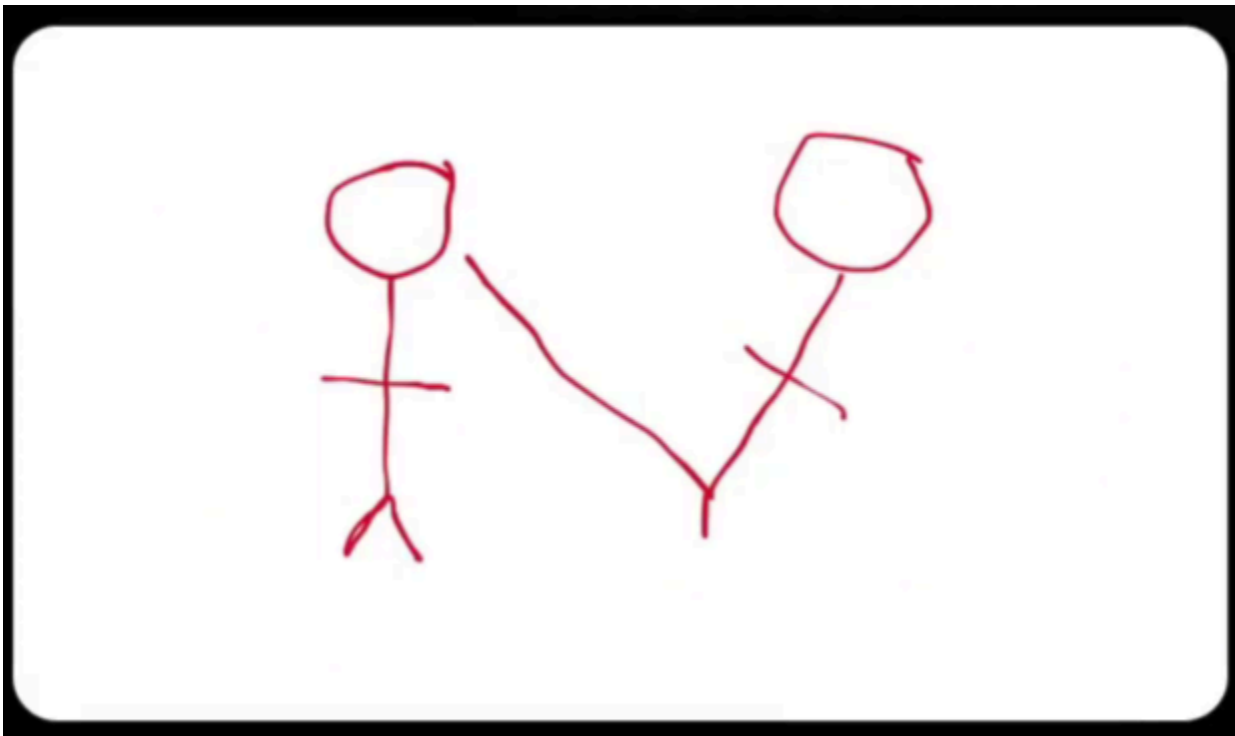
Pose Control: Use a Stick Figure as the Pose Reference

A surprisingly powerful trick from the lesson:

1. Draw a **stick figure pose** (even rough is fine)
2. Upload:
 - the stick figure pose image
 - your character image
3. Prompt Nano Banana to match the pose

Prompt template

“have the anime characters posed like the stick figures are, the one on the right is kicking the one on the left”





hãve the anime characters posed like the stick figures are, the one on the right is kicking the one on the left

I can definitely do that for you! Here's the image of the anime characters posed like the stick figures, with the character on the right kicking the one on the left:



now change the setting to be at the beach

How to Use Nano Banana in an AI Video Workflow (3 steps)

This section matches the captions step-for-step.

Step 1 — Storyboarding

Before you animate in **Veo-free / Cling / any AI video tool**, use Nano Banana to **mock up shots** and build storyboard frames by editing base images until they match your vision.

Step 2 — World building

Example: making a sci-fi trailer

- Generate raw concept art in **Midjourney**
- Bring it into Nano Banana and refine:
 - add crowds
 - change weather
 - tweak costumes (This creates a consistent visual style for your world).

Step 3 — Character looks

Pick one portrait of your main character and test:

- outfits
- hairstyles
- even ages (Once locked in, reuse that look across scenes).

Watermark Note (and how to remove it)

The lesson notes there's **always a small watermark** in the **bottom-right corner**. If you need it removed, use **Canva Magic Edit**.

The “Multiple Objects” Secret (Important)

This is the part I *didn't fully capture* before — now included exactly as taught.

The problem

If you upload a bunch of separate objects straight into Gemini, **90% of the time**:

- it won't be accurate, **or**
- it will say it can't generate due to **guidelines**

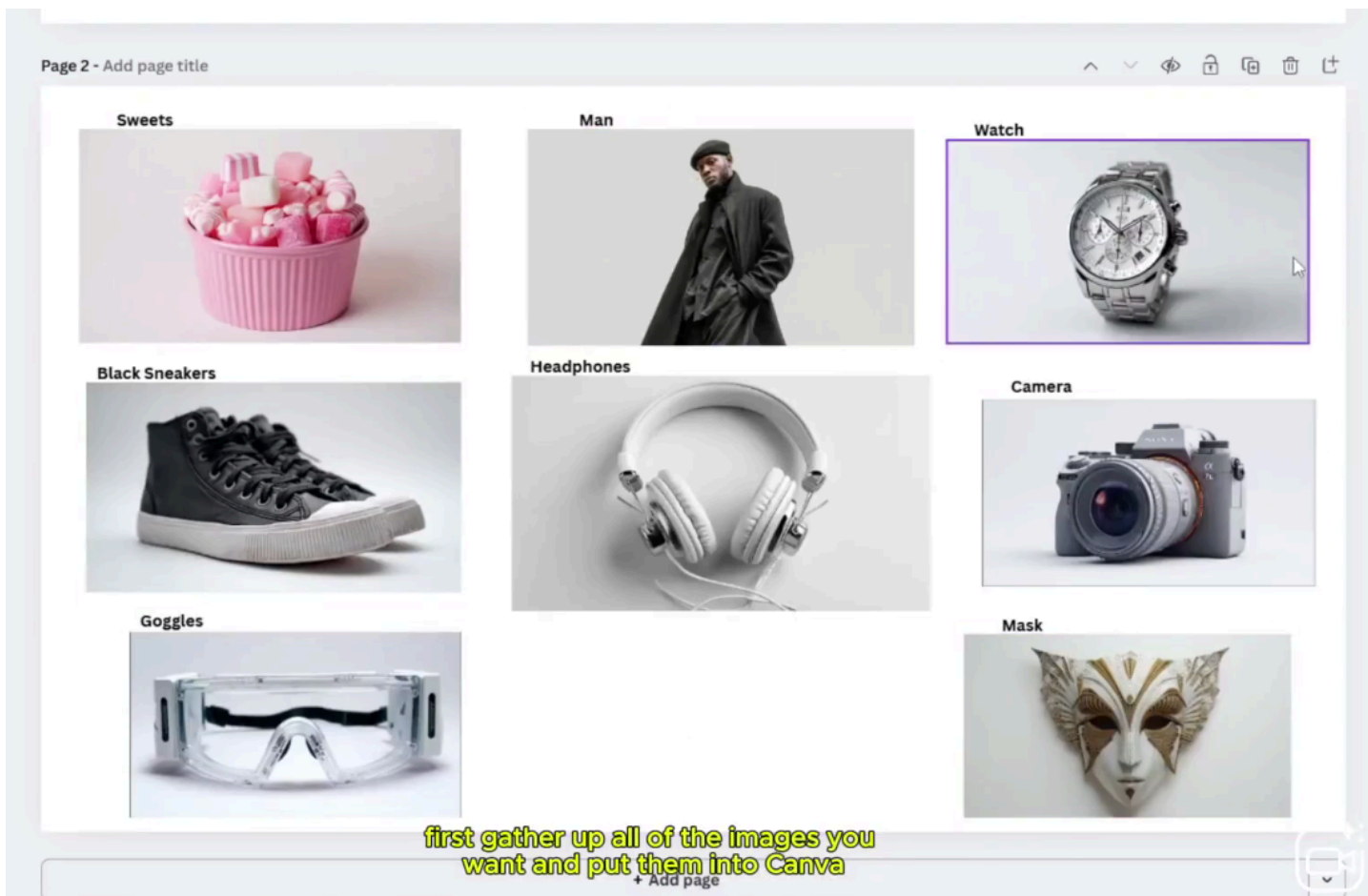
The fix: label everything in Canva

1. Gather all object images you want to add
2. Put them into **Canva**
3. **Label each object** clearly (text labels next to each item)
4. Export that as a single labeled board image
5. Upload the labeled board into Nano Banana
6. In your prompt, reference the labels so Nano Banana knows exactly what you mean

Result: you can add a **crazy amount** of things and it tends to nail it **first try** with very high accuracy (the captions emphasize this strongly).

Example outcome mentioned: you can clearly see each object (e.g., **sweets, headphones**) placed exactly where requested (headphones perfectly positioned on the table).

Canva board example



Prompt:

a man is standing in a modern electronic store analyzing a digital camera. He is wearing a watch. On the table in front of him are goggles, headphones a stand, a pair of black sneakers, a tub of sweets and a mask

Result:



Why Nano Banana matters (the closing points)

From the lesson's conclusion:

- It **speeds up everything** — storyboarding, character design, frame cleanup goes from **days** to **minutes**
- That means more time actually creating videos and growing your audience/business
- It **lowers the barrier to entry**: even if you can't draw or use Photoshop, you can now compete
- It **levels the playing field**